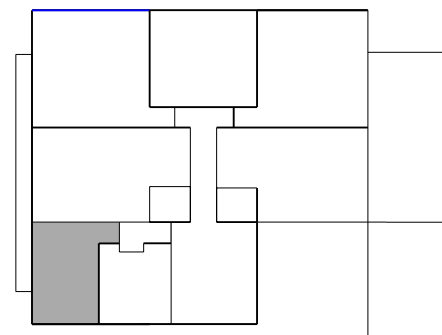
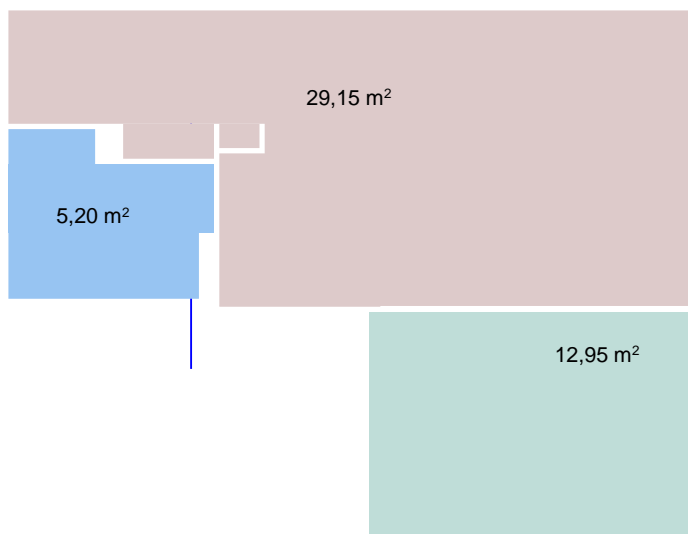
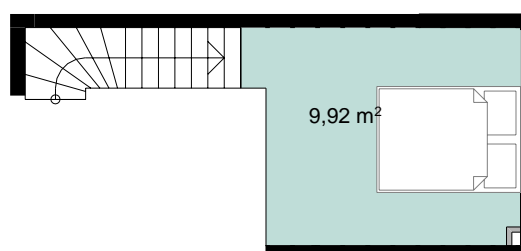
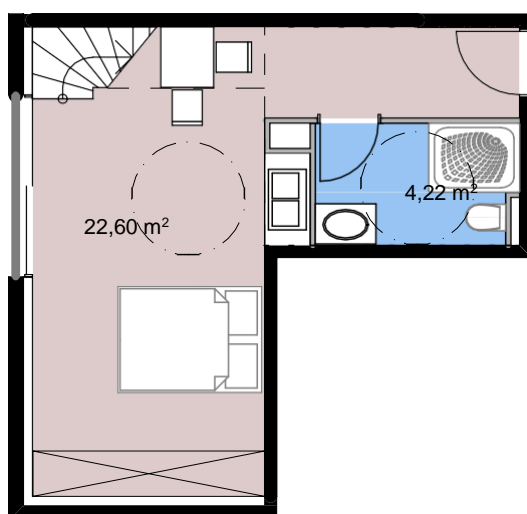


APPARTEMENT T1 N°302

3 ETAGE SUD OUEST



PLAN DE SITUATION



**SURFACE TOTALE "-
36,74m2**

TABLEAU DES SURFACES

SALON CUISINE	22,60m2
CHAMBRE	9,92m2
SANITAIRE	4,22m2
<u>SURFACE</u>	<u>36,74m2</u>