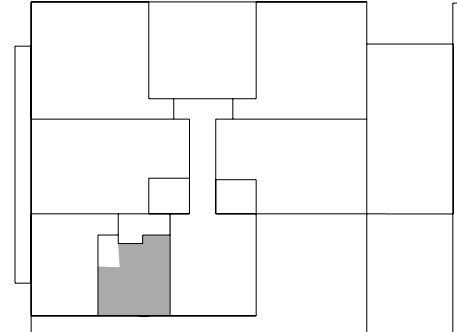
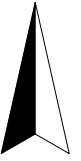
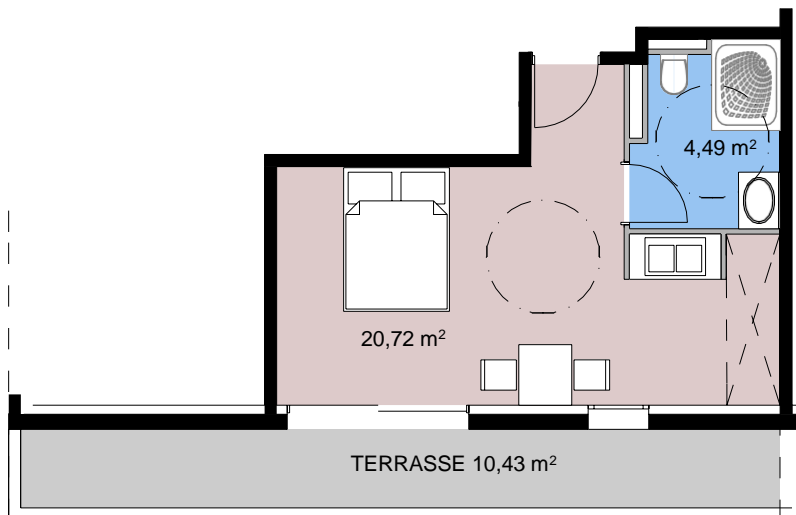


APPARTEMENT STUDIO N°301

3 ETAGE SUD OUEST



PLAN DE SITUATION



SURFACE TOTALE
25,20m²

TABLEAU DES SURFACES

SALON CUISINE	20,72m²
SANITAIRE	4,49m²
<u>SURFACE</u>	<u>25,20m²</u>